

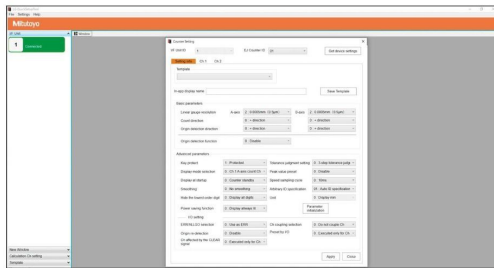
Linear Gages

LG QuickSetupTool Application Software

G

- A configuration tool is available for use with the **EJ** counter when connected via the optional USB interface.
- All kinds of settings normally carried out with counter operating keys can now be easily applied from a computer.
- Measurement value display and operation results can also be viewed on a PC.

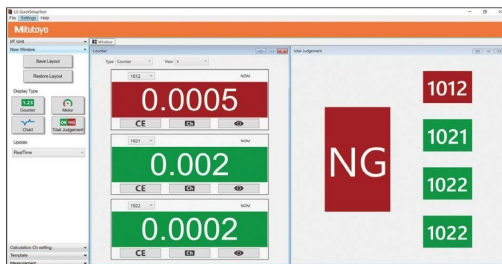
Note: This software can be used free of charge and downloaded from the Mitutoyo website.
<https://www.mitutoyo.co.jp/eng/contact/products/lg/>



Parameter setting



Chart



General settings

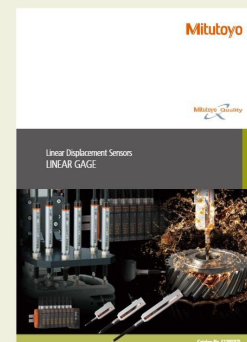
Recommended system environment

OS: Windows10 Pro 32 bit/64 bit
 Display: 1600×1200 or more
 Memory: 1024 MB or more
 Communication method: USB2.0 (Full speed)
 USB connector: Type C connector
 Note: USB device drivers are standard Windows drivers.

Mitutoyo

G-15

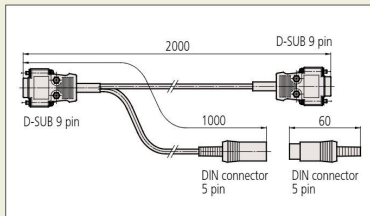
Mitutoyo reserves the right to change any or all aspects of any product specification, including prices, designs and service content, without notice.



Refer to the Linear Gage Brochure
(E13007) for more details.

Optional Accessory

- I/O cable: **21HZA137**



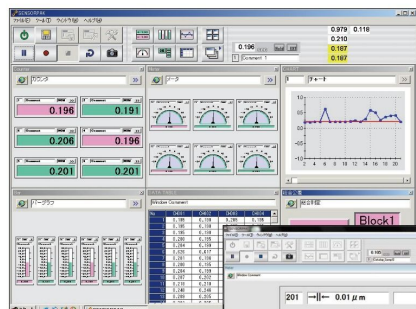
- Communication cable (1 pc.)
Connection between PC and counter: 2 m
- Input/output cable: 1 m
- Input/output connector (1 pc.)



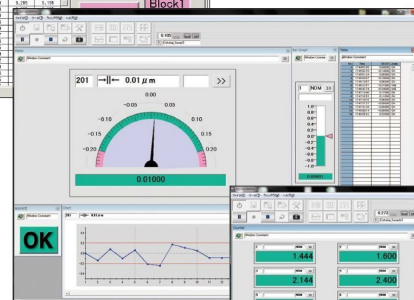
Refer to the Linear Gage Brochure (E13007) for more details.

SENSORPAK Measurement data loading software

- This software facilitates loading measurement data onto a personal computer from a linear gage counter with RS-232C output (EH, EV), with USB output (EH), or from a Litematic display (VL).
- 60 channels (max.) of measurement data can be processed.
- Arithmetical calculations and maximum width calculations can be performed using the measurement data.
- Exporting measurement data into MS-Excel format is supported.
- Real time graphical display by means of bar-graph or meter is provided.



Measurement screen



Meter screen



License key

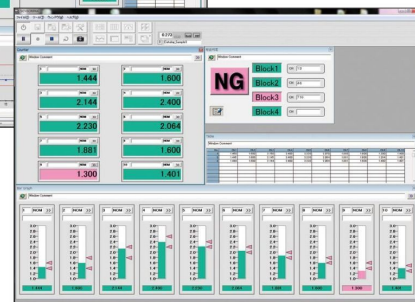


Chart screen

SPECIFICATIONS

| Order No. | 02NGB072 | |
|--|--|--|
| Product Configuration | Program disk (CD), license key, operation manual | |
| Compatible devices (Connection method) | Mitutoyo RS_LINK compatible devices <ul style="list-style-type: none"> • LGH Series (USB, RS-232C) • EH counter (USB, RS-232C) • EV counter (RS-232C) • Litematic VL (RS-232C) | |
| Connecting cable | A cable should be prepared to the following specifications: <ul style="list-style-type: none"> Accessory <ul style="list-style-type: none"> • RS-232C connection: I/O cable (21HZA137)*1 Commercial product <ul style="list-style-type: none"> • USB connection: USB cable (type A to type B) • RS-232C connection: RS-232C cross cable*1 | |
| Number of connectable gages | Max. 60 units (when 10 units of EV counter for linear gage are connected via RS-Link) | |
| Functions | Display*2 | Display format: counting, bar graph, indicator, chart, and table Display cycle: 1s (when 60 gage units are connected, 1-window display, and no Excel output) |
| | Calculation | Calculation (up to 30 items) between designated gages is available. Calculation items: Sum, difference, total, average, maximum, minimum, range (maximum-minimum), calculation with a constant |
| | Tolerance judgment | Per item: Displays the result in colors (3-step tolerance: red/green/red; 5-step tolerance: red/yellow/green/yellow/red) Total judgment: Displays in colors (red/green) by monitoring the multiple gages and calculation result |
| | Recording*2 | Items: channel values, calculation result, tolerance judgment, total tolerance judgment, timestamp Max. number of records: 60000 for software recording (with 6 gages connected); up to 9000 (with 60 gages connected) Output function: Direct output to Excel, CSV file output (compatible with MeasurLink®) Recording trigger: key, timer, external TRG |
| | Input/output*3 | Input: TRG for recording (HOLD) Output: Total tolerance judgment result |
| System Environment | DOS/V compatible PC environment CPU: Pentium4 2 GHz or more, Memory: 2 GB or more, Hard disk: 2 GB or more free space OS: Windows 7 (32 bit/64 bit), Windows 8.1 (32 bit/64 bit), Windows 10 (64 bit) | |

*1 If the PC is not equipped with an RS-232C port, please contact the nearest Mitutoyo sales office.

*2 Display cycle and the maximum number of records differ depending on the environment (specification of PC, number of connected gages, display format and communication setting).

*3 With use of the I/O cable (accessory). When an I/O cable is not used, the I/O connector of the counter alternatively functions. (Refer to the user's manual of the counter in use.)