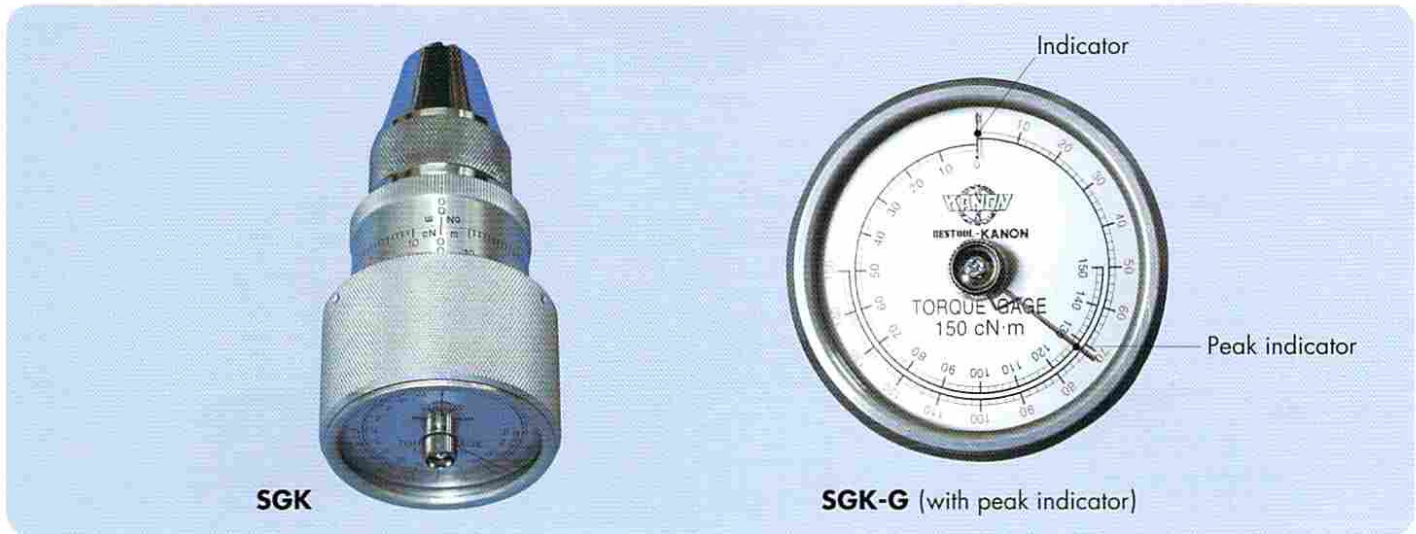


SGK TORQUE GAUGES

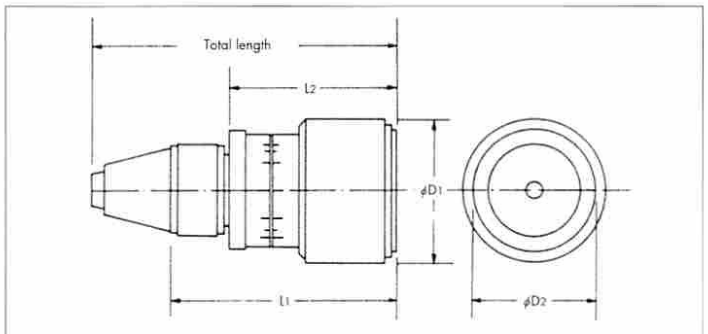
Capable of accurately measuring very low torque values.



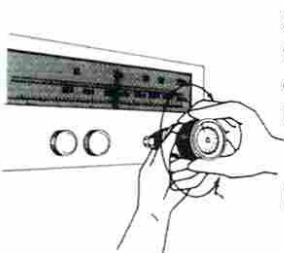
* Peak indicator is optional

FEATURES

- Due to their miniature design and light weight, these gauges are convenient and easy to carry.
- A three part chuck with knurled surface enables firmly gripping even odd shapes.
- The inset scale face helps avoid incidental damage.
- The gauges measure clockwise and counterclockwise.
- With scales on the sides and the face, torque readings can be obtained either way.
- Accuracy : $\pm 3\%$ of the indicated value over the full range



USING AN SGK GAUGE



Starting torque can be measured with the chuck gripping a knob or shaft of an electronic device.
Rotate clockwise or counterclockwise.

(Rotate CW or CCW)



- If you would like SGK with a peak indicator, please specify "SGK-G" on your purchase order.
ex). N150(I)SGK-G

Three part chuck

Model SGK	Range (CW/CCW) gf·cm / kgf·cm	Increment	Model N-SGK	Range (CW/CCW) mN·m / cN·m	Increment	Chucking dia. φ mm	Total length mm	Dimensions (mm)				Weight kg
								Grip dia.		Total length (without chuck)		
								φD1	φD2	L1	L2	
90 (I) SGK	10~90	2 gf·cm	N90 (I) SGK	1~9	0.2 mN·m	1-6.5	106	43	36	83	57.5	0.29
150 (I) SGK	20~150	2	N150 (I) SGK	2~15	0.2							
300 (I) SGK	40~300	5	N300 (I) SGK	4~30	0.5							
600 (I) SGK	50~600	10	N600 (I) SGK	5~60	1							
1200 (I) SGK	100~1200	20	N1200 (I) SGK	10~120	2							
2400 (I) SGK	200~2400	50	N2400 (I) SGK	20~240	5							
1.5 (II) SGK	0.1~1.5	0.02 kgf·cm	N1.5 (II) SGK	1~15	0.2 cN·m	1-8.5	132	63	53	102	72	0.6
2.4 (II) SGK	0.2~2.4	0.02	N2.4 (II) SGK	2~24	0.2							
3.6 (II) SGK	0.4~3.6	0.05	N3.6 (II) SGK	4~36	0.5							
6 (II) SGK	0.5~6	0.1	N6 (II) SGK	5~60	1							
9 (II) SGK	1~9	0.2	N9 (II) SGK	10~90	2							
15 (II) SGK	1~15	0.2	N15 (II) SGK	10~150	2							