

MiCAT Planner

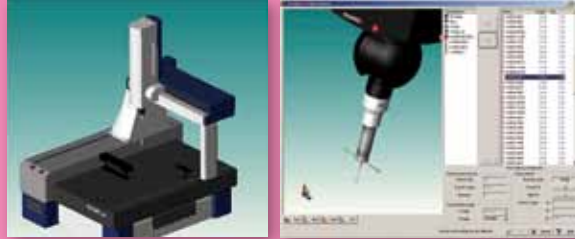
Automatic measurement program generation software

One-click programming that changes the relationship
between people and precision measurement

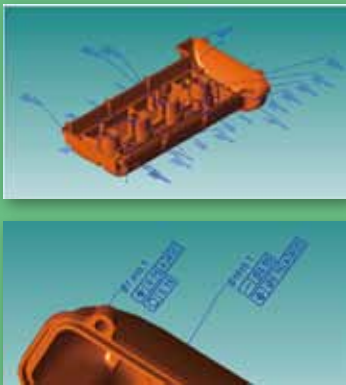


One-click programming that changes the relationship between people and precision measurement

CMM System structural information

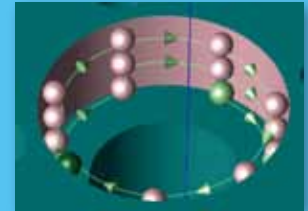


CAD data with tolerance information

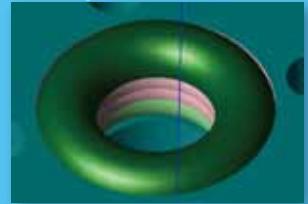


User defined measurement rules (number of locations to measure) and sampling method, etc.,

Example of sampling method: touch measurement



Example of sampling method: scanning measurement



Instantly and automatically creates a measurement program



Output a measurement program for MCOSMOS

FEATURES

- 1 Identifies tolerance information included in 3D models with Product and Manufacturing Information (PMI), defines measurement locations and creates a measurement program fully automatically.
- 2 Through its optimization function, the software estimates the shortest route for measurement with the minimum of probe repositioning and tool changing, and creates a program that enables measurement in the minimum possible time.
- 3 Utilizing the rule editor function to set the measurement rules prevents variation in measurement quality between program writers.

Screen setups and features

MiCAT Planner screen setups offer simple interfaces such as 3D view and plain view, thereby enabling intuitive operation. The placement and window sizes of the interfaces can be freely customized.

3D view

Full-color graphics show:

- Measuring machine details
- CAD model with tolerances
- Measurement points and measurement paths
- Measurement animations

Plan view

- Shows lists such as measurement parameters and tolerances.
- Lets you flag measurements and assessments using check boxes.
- The parameters are set in the order of the measurements.
- You can easily change the order of measurements by dragging and dropping parameters using a mouse.

Properties view

You can change the names of parameters, tolerance items and measurement points, and edit measurement points for individual parameters.

Program view

- Shows measurement details and measurement estimation times.
- Enables animation of measurement programs in 3D.

Case study

Compare the measurement part-programming time for a test piece.

- 1: Programming in 2D drawing: **45-60 minutes**
- 2: Programming using 2D drawing + 3D CAD: **15-20 minutes**
- 3: Create with MiCAT Planner (using 3D CAD model + PMI): **approx. 3 minutes!**

Note: The measurement rules are defined in advance.

Part-programming time **Reduced by up to 95% !!**

Guarantee a **dramatically reduced development phase** and at the same time improve product quality.

Supported CAD formats

CAD format	Extension	Supported version
ACIS	.sat	R1-R25 (PMI unsupported)
UG/NX *1	.prt	11-18, NX1-9
Creo Parametric (Pro/E) *1	.prt/ .prt.*	16-Wildfire5, Creo 1.0-2.0
CATIA v5 *1	.CATPART	R8 – R24 (V5 – 6R2014)

*1 Option (either one is included as standard)
Note: the model requires that you have the solid model.
Assembly data is not supported.

Tolerance information add function

Lets you add tolerances in the software even for 3D CAD models containing no tolerance information. Automatically create optimal measuring programs based on the added tolerance specifications.

Supports MCOSMOS

MCOSMOS v4.0R4 or higher

* To use a measuring program created by the MiCAT Planner you will need a special "right to execute". A "right to execute" for one 3D measuring machine is included in the MiCAT Planner.

Supported languages

Available in 8 languages (Japanese, English (US, UK), German, French, Spanish, Portuguese, Italian and Chinese (simplified))



Whatever your challenges are, Mitutoyo supports you from start to finish.

Mitutoyo is not only a manufacturer of top quality measuring products but one that also offers qualified support for the lifetime of the equipment, backed up by comprehensive services that ensure your staff can make the very best use of the investment.

Apart from the basics of calibration and repair, Mitutoyo offers product and metrology training, as well as IT support for the sophisticated software used in modern measuring technology. We can also design, build, test and deliver bespoke measuring solutions and even, if deemed cost-effective, take your critical measurement challenges in-house on a sub-contract basis.

Note: Product illustrations are without obligation. Product descriptions, in particular any and all technical specifications, are only binding when explicitly agreed upon.

MITUTOYO and MiCAT are either registered trademarks or trademarks of Mitutoyo Corp. in Japan and/or other countries/regions. Other product, company and brand names mentioned herein are for identification purposes only and may be the trademarks of their respective holders.



Mitutoyo Asia Pacific Pte. Ltd.

Company Reg No. 197800892N
24 Kallang Avenue, Mitutoyo Building, Singapore 339415
Tel: (65) 6294 2211 Fax: (65) 6299 6666
E-mail: mapsg@mitutoyo.com.sg



www.mitutoyo.com.sg | www.mitutoyo.com.my
www.mitutoyo.co.th | www.mitutoyo.co.id
www.mitutoyo.com.vn | www.mitutoyo.com.ph

Mitutoyo (Malaysia) Sdn. Bhd.

Mah Sing Integrated Industrial Park,
 4, Jalan Utarid U5/14, Section U5,
 40150 Shah Alam, Selangor, Malaysia
 Tel: (60) 3-7845 9318
 Fax: (60) 3-7845 9346
 E-mail: mmsb@mitutoyo.com.my

Penang Branch

Tel: (60) 4-641 1998 Fax: (60) 4-641 2998
 E-mail: mmsbpen@mitutoyo.com.my

Johor Branch

Tel: (60) 7-352 1626 Fax: (60) 7-352 1628
 E-mail: mmsbjhr@mitutoyo.com.my

Mitutoyo (Thailand) Co., Ltd.

76/3-5, Chaengwattana Road, Kwaeng
 Anusaawaree, Khet Bangkaen,
 Bangkok 10220, Thailand
 Tel: (66) 2-080 3500
 Fax: (66) 2-521 6136
 E-mail: office@mitutoyo.co.th

Chonburi Branch

Tel: (66) 2-080 3563 Fax: (66) 3-834 5788

Amata Nakorn Branch

Tel: (66) 2-080 3565 Fax: (66) 3-846 8978

PT. Mitutoyo Indonesia

Jalan Sriwijaya No.26
 Desa cibatu
 Kec. Cikarang Selatan
 Kab. Bekasi 17530, Indonesia
 Tel: (62) 21-2962 8600
 Fax: (62) 21-2962 8604
 E-mail: ptmi@mitutoyo.co.id

Mitutoyo Vietnam Co., Ltd.

No. 07-TT4, My Dinh - Me Tri Urban Zone,
 My Dinh 1 Ward, Nam Tu Liem District,
 Hanoi, Vietnam
 Tel: (84) 4-3768 8963
 Fax: (84) 4-3768 8960
 E-mail: mvc-hn@mitutoyo.com.vn

Ho Chi Minh City Branch

Tel: (84) 8-3840 3489
 Fax: (84) 8-3840 3498
 E-mail: mvc-hcmc@mitutoyo.com.vn

Mitutoyo Philippines, Inc.

Unit 2103, GMV Building 2,
 107 North Main Avenue,
 Laguna Technopark, Biñan,
 Laguna 4024, Philippines
 Tel: (63) 49-544 0272
 Fax: (63) 49-544 0272
 E-mail: mpi@mitutoyo.com.ph