

# Fixture for Compression Testing PR-500N/2500N

Combined with a motorized test stand and a force gauge,  
 it is suitable for compression testing on such as retort pouch, heat seal packaging and so on.



PR-500N



PR-2500N

**[Application]**







Compression testing on retort pouch  
 (According to JISZ0238)



Compression testing on corrugated cardboard

The test method below is possible, combined with recommended test stand and force gauge on next page.

Measurement according to **JIS Z0238**[Testing methods for heat sealed flexible packages] is possible.  
 (Keep compressing for over one minute with over 400N)

			
<p><b>With one dial</b></p> <ul style="list-style-type: none"> <li>- Speed adjustment</li> <li>- Set-up the number of test cycles</li> <li>- Settings for time to compress</li> <li>- Fine adjustment of a force gauge's position</li> </ul>	<p><b>Repetition Test</b></p> <p>Select the number of test cycles from 1 to 65535 times and the test stand will continue to run to specified times.</p>	<p><b>Durability Test</b></p> <p>Set up pausing time and the test stand will keep adding force for specified time.</p>	<p><b>Prevention against sensor break-down</b></p> <p>It stops operation before force over capacity is added, combining with Z series force gauge and its cable.          *Optional cable is necessary.          *We cannot assure the perfect prevention against sensor break-down</p>

**[The recommended combination]**

Measurement up to 500N]

Attachment	Force gauge	Test stand	Cable
PR-500N	ZTS(ZTA) series	MX2-500N/1000N	CB-518

Measurement up to 2500N

Attachment	Force gauge	Test stand	Cable
PR-2500N	High Capacity Model ZTS(ZTA) series	MX2-1000N/2500N	CB-518

\*The combinations above make it possible to keep adding force for specified time and perform a specific number of test cycles.\*Please select ranges of a force gauge and a test stand appropriate for your sample.

**[Specifications]**

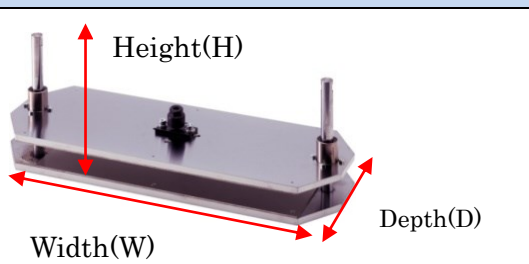
Model	PR-500N	PR-2500N	PR-○○N-□□□
Capacity *1	500N	2500N	500N or 2500N
Size	W260×D120×H156(mm)	W280×D140×H159(mm)	Size can be customized.(*2)
Sample maximum size	W194×D120×H105(mm)	W200×D140×H105(mm)	
Weight	Upper	Approx. 0.9kg	Approx.3.1kg
	Lower	Approx. 1kg	Approx.3.2kg
Recommended force gauge	ZP(Z2)-500N/1000N	ZPH(Z2H)-2000N/5000N	—
Screws to mount a force gauge	M6	M10	M6 or M10
Recommended test stand	MX2-500N/1000N	MX2-1000N/2500N	—

\*1Capacity depends on the range of a force gauge used together.

\*2 Specification could be different according to size change.



**We customize according to your sample.**




The model after size change (width 400mm extension)

PR-○○N-**W400**

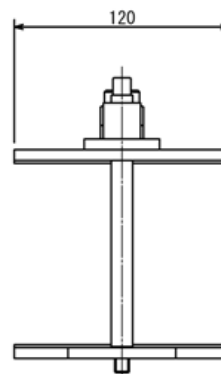
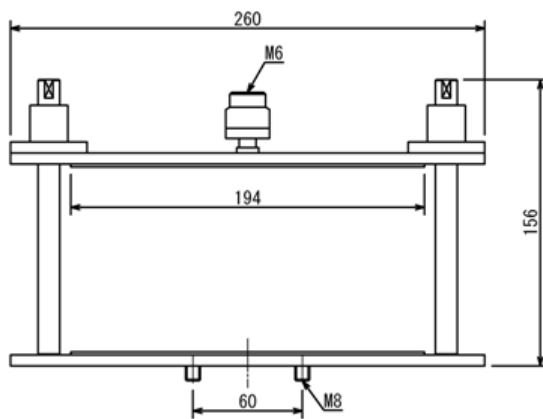
Range suitable for your sample  
Depthchange:DHeight change: H

**[Option]**

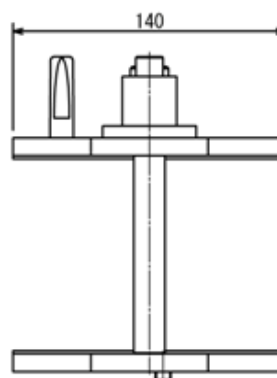
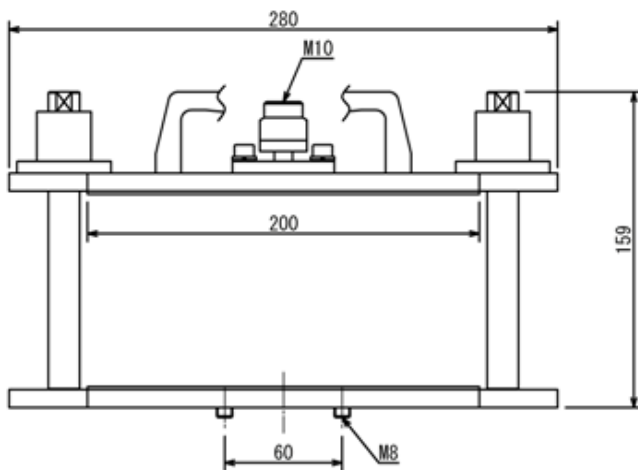
Anti-scattering panel	Purpose
	<p>It prevents sample scattering.</p>

**[Dimensions]**

**PR-500N**



**PR-2500N**



**[Cautions]**

- The contents may be changed without prior notice.
- A force gauge, a motorized test stand and a cable are necessary for force measurement with PR series.
- These products are designed for force measurement only. Do not use it for other purpose.
- Do not copy and use the contents without authority.