



Select Language | ▼

You're here:

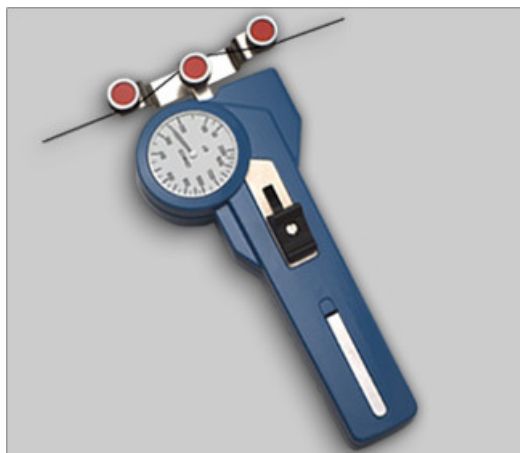
- [Products](#) »
- [Tension Meter](#) »
- [Hand-Held, mechanical](#) »
- [DX Series](#) »
- [Model DX2-EDM](#)

## Tension Meter DX2-EDM

3 Tension ranges from 50 - 2000 cN to 200 - 4000 cN

**Mechanical tension meter for all current wire EDM machines with wire diameter approx. 0.25 mm**  
**Most popular tension meter for wire EDM machines worldwide**

**For ideal wire tension to increase the accuracy of produced workparts and to optimize the machine delay**



Tension meter DX2-EDM

### Special Features

- The analog display shows changing and fluctuating tensions fast and enables an optimal process adjustment
- Easy to operate
- Roller shifting mechanism ensure easy acquisition of the running material
- Hand-held unit with built-in mounting holes permit fixed installation for continuous tension measurement
- Special finger support located on the rear side reduces the effort to move the outer roller assembly



**Finger Support:** We recommend mounting a finger support for higher tension ranges

**Note:** This model does not include a material thickness compensator

### Standard Features

- Everything in operator's view:
  - the guide rollers
  - the measured material
  - the readings

- Ball-bearing mounted, V-grooved guide rollers
- Each instrument is individually calibrated for highest accuracy
- 41 mm Ø scale
- Rugged aluminium housing
- Certificate of Compliance with the order 2.1 according EN 10204 is included
- Optionally available: Inspection Certificate 3.1 according EN 10204 with calibration report

## Wire EDM Information

### Click picture

to get more information  
about wire EDM machines

## Available Models

Model	Tension Ranges cN	Measuring Head Width* mm	SCHMIDT Calibration Material**
DX2-2000-EDM	50 - 2000	91	PA: 0.30 mm Ø
DX2-3000-EDM	100 - 3000	91	PA: 0.30 mm Ø
DX2-4000-EDM	200 - 4000	116	PA: 0.40 mm Ø

Other tension ranges and measuring head widths available on request.

Other units of measure available, such as g.

\* Depending on model, either width of wire guide or outer distance between outside guide rollers

\*\* Suitable for 95 % of applications - PA = Polyamide Monofilament

### Calibration to customized material:

If process material differs significantly from the SCHMIDT calibration material in diameter, rigidity or shape, special calibration using customer supplied samples is recommended. For this purpose a material sample of about 5 m should be supplied.

## Scales

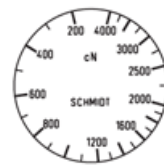
### Click to get larger image



[Model DX2-2000 - EDM](#)



[Model DX2-3000 - EDM](#)



[Model DX2-4000 - EDM](#)

SCHMIDT scales are manufactured according to the most stringent quality requirements. Printed scales are not used. Instead, each scale is individually marked for the instrument involved. This ensures highest quality. Our special procedure makes it possible to provide tension meters

- calibrated to custom supplied material
- fine tuned to a specific tension range
- other units of measure such as g

## Guide Rollers

Order-Code	Line Speed		Roller Material
	$v_{\max}$	...m/min	
<b>Standard</b>	2000		Hardcoated aluminium
<b>Code CE2</b>	1000		Ceramic

Click the order-code, to get picture and drawing of the guide rollers

---

### Ersatzrollen

Click picture to get an overview for the guide rollers

---

### Calibration Report (optional)

**Inspection Certificate 3.1** according DIN EN 10204 including a calibration report is optional available

Click picture for more information

---

### Ordering Example

To place an order	Model with tension range		Code for guide rollers (if not standard)		Complete Order No.
Please indicate the complete order number, e. g.:	DX2-2000-EDM	+	CE1	=	DX2-2000-EDM-CE1

---

### Delivery Includes



Tension meter with carrying case, operating instruction in three languages (english, german, french), Certificate of Compliance with the order 2.1 according EN 10204 free of charge

---

### Dimensions

For PDF-file please click picture

---

### Specifications

<b>Calibration:</b>	According to SCHMIDT factory procedure
<b>Accuracy:</b>	$\pm 1$ % full scale or $\pm 1$ graduation on scale
<b>Scale diameter:</b>	41 mm
<b>Temperature range:</b>	10 - 45 °C
<b>Air humidity:</b>	85 % RH, max.
<b>Housing material:</b>	Die-cast aluminium
<b>Dimensions:</b>	See dimensions above
<b>Weight, net (gross):</b>	approx. 470 g (1000 g)

Specifications subject to change without notice!

- [Contact](#) |
- [Imprint](#) |
- [Sitemap](#)

HANS SCHMIDT & CO GMBH | Schichtstraße 16 | 84478 Waldkraiburg / Germany | Tel.: + 49 (0)8638 9410-0 | Fax: + 49 (0)8638 4825