



Select Language | ▼

You're here:

- [Products](#) »
- [Tension Meter](#) »
- [Hand-Held, mechanical](#) »
- [Z Series](#) »
- [Model ZD2](#)

Tension Meter ZD2

6 Tension ranges from 3 - 30 cN to 20 - 300 cN

Economical mechanical tension meter for checking fibres, threads and fine wires with low tensions up to max. 300 cN

Universal measuring unit with large guide rollers groove Ø 12.5 mm

Tension Meter for a variety of applications in the textile and wire industrie



Tension meter ZD2

Special Features

- The analog display shows changing and fluctuating tensions fast and enables an optimal process adjustment
- Filament guide and roller shifting mechanism ensure easy acquisition of the running material
- Large, easy to read scale (54 mm Ø)
- Light weight

Standard Features

- Everything in operator's view:
 - the guide rollers
 - the measured material
 - the readings
- Ball-bearing mounted, V-grooved guide rollers
- Each instrument is individually calibrated for highest accuracy
- Tension meter with high-strength plastic housing
- Certificate of Compliance with the order 2.1 according EN 10204 is included
- Optionally available: Inspection Certificate 3.1 according EN 10204 with calibration report

Available Models

Model	Tension Ranges cN	Measuring Head Width* mm	SCHMIDT Calibration Material**
ZD2-30	3 - 30	63	PA: 0.12 mm Ø
ZD2-50	5 - 50	63	PA: 0.12 mm Ø
ZD2-100	10 - 100	63	PA: 0.12 mm Ø
ZD2-150	20 - 150	63	PA: 0.12 mm Ø
ZD2-200	20 - 200	63	PA: 0.12 mm Ø
ZD2-300	20 - 300	63	PA: 0.20 mm Ø

Other tension ranges available on request.

Other units of measure available, such as g.

* Width of filament guide

** Suitable for 95 % of applications - PA = Polyamide Monofilament

Calibration to customized material:

If process material differs significantly from the SCHMIDT calibration material in diameter, rigidity or shape, special calibration using customer supplied samples is recommended. For this purpose a material sample of about 5 m should be supplied.

Scales

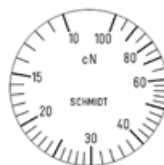
Click to get larger image



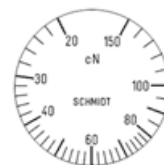
[Model ZD2 - 30](#)



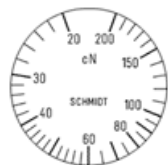
[Model ZD2 - 50](#)



[Model ZD2 - 100](#)



[Model ZD2 - 150](#)



[Model ZD2 - 200](#)



[Model ZD2 - 300](#)

SCHMIDT scales are manufactured according to the most stringent quality requirements. Printed scales are not used. Instead, each scale is individually marked for the instrument involved. This ensures highest quality. Our special procedure makes it possible to provide tension meters

- calibrated to custom supplied material
- fine tuned to a specific tension range
- other units of measure such as g

Guide Rollers

Order-Code	Line Speed		Roller Material
	v_{max}	...m/min	
Standard	2000		Hardcoated aluminium (R10003)
Code K	3500		Hardcoated aluminium
Code H	5000		Plasma-coated aluminium (model ZD2-100 and higher)
Code T	1000		Plastic (POM) black

Code W	1000	Nickel-plated steel
Code ST	1000	Hardened steel
Code CE2	1000	Aluminium ceramic-coated

Click the order-code, to get picture and drawing of the guide rollers

Spare Rollers

Click picture to get an overview for the guide rollers

Calibration Report (optional)

Inspection Certificate 3.1 according DIN EN 10204 including a calibration report is optional available

Click picture for more information

Ordering Example

To place an order	Model with tension range		Code for guide rollers (if not standard)		Complete Order No.
Please indicate the complete order number, e. g.:	ZD2-100	+	K	=	ZD2-100-K

Delivery Includes



Tension meter with carrying case, operating instruction in german or english (as requested), Certificate of Compliance with the order 2.1 free of charge

Dimensions

For PDF-file please click picture

Specifications

Calibration:	According to SCHMIDT factory procedure
Accuracy:	±1 % full scale or ±1 graduation on scale
Scale diameter:	54 mm
Temperature range:	10 - 45 °C

Air humidity:	85 % RH, max.
Housing material:	Plastic (POM)
Dimensions:	See dimensions above
Weight, net (gross):	Approx. 220 g (620 g)

Specifications subject to change without notice!

- [Contact](#) |
- [Imprint](#) |
- [Sitemap](#)

HANS SCHMIDT & CO GMBH | Schichtstraße 16 | 84478 Waldkraiburg / Germany | Tel.: + 49 (0)8638 9410-0 | Fax: + 49 (0)8638 4825