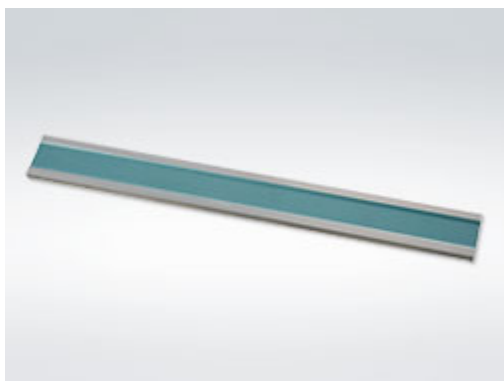


## Precision Straight Edge I-Type



- I-type Straight Edge is used for inspection and measurement of flatness, straightness and parallelness as inspecting tool.

Item Code	Effective Length x Height x Width (Usable vertical) (mm)	Straightness / Uneven Height (mm)	Net Weight (kg)
RSHA-300	300x60x10	±0.003	1
RSHA-500	500x60x10	±0.004	1.7
RSHA-1000	1000x70x12	±0.006	5.1
RSHA-1500	1500x90x14	±0.008	10.4
RSHA-2000	2000x110x16	±0.010	20.2

## Precision Knife-Type Straight Edge



- A high class straight edge which is so-called as a knife edge. As the edge surface is made as a thin blade.

Item Code	Overall Length x Width x Thickness (mm)	Straightness (mm)	Net Weight (kg)
RSHN-100	100x24x6	±0.0014	0.16
RSHN-150	150x25x7	±0.0016	0.24
RSHN-200	200x30x8	±0.0018	0.4
RSHN-300	300x32x9	±0.0022	0.65
RSHN-400	400x35x10	±0.0026	0.9
RSHN-500	500x40x10	±0.0030	1.5

## I Beam-Type Precision Straight Edge



- A standard rule with high accuracy is used for inspection and measurement of flatness, straightness, and parallelness as an inspecting tool.

Item Code	Overall Length x Height x Width (Usable vertical) (mm)	Straightness / Uneven Height (mm)		Net Weight (kg)
RIBM-500	500x60x10	±0.007	Without Hardening	1.5
RIBM-750	750x60x10	±0.010		3.2
RIBM-1000	1000x70x12	±0.012		5
RIBM-1500	1500x80x15	±0.017		8.5
RIBM-2000	2000x100x18	±0.022		18
RIBM-2500	2500x110x18	±0.027		25
RIBM-3000	3000x130x22	±0.032	Hardening	44
RIBM-500Y	500x60x10	±0.007		1.5
RIBM-750Y	750x60x10	±0.010		3.2
RIBM-1000Y	1000x70x12	±0.012		5
RIBM-1500Y	1500x80x15	±0.017		8.5
RIBM-2000Y	2000x100x18	±0.022		18
RIBM-2500Y	2500x110x18	±0.027		30
RIBM-3000Y	3000x130x22	±0.032		44

Wide-Type Precision Straight Edge A Class



●It is suitable for precision machine setting if precision level put together with.

Item Code	Overall Length x Height x Width (Usable vertical) (mm)	Straightness / Uneven Height (mm)		Net Weight (kg)
RSHW-1000	1000x80x50	±0.006	Without Hardening	13
RSHW-1500	1500x100x50	±0.008		30
RSHW-2000	2000x120x50	±0.010		45
RSHW-1000Y	1000x80x50	±0.006	Hardening	13
RSHW-1500Y	1500x100x50	±0.008		30
RSHW-2000Y	2000x120x50	±0.010		45

---

## Steel Straight Edge

---

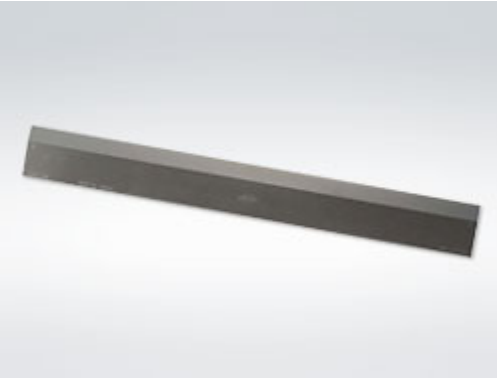


- Steel straight edge is used for the marking-off in sheet metal processing and finishing.

Item Code	Overall Length x Width x Thickness (mm)	Straightness (mm)		Net Weight (kg)
RSHF-200	200x29x4	±0.012	Without Hardening	0.11
RSHF-300	300x35x4	±0.013		0.41
RSHF-500	500x45x6	±0.015		0.8
RSHF-600	600x48x6	±0.016		0.9
RSHF-750	750x48x6	±0.018		1.7
RSHF-1000	1000x48x6	±0.020		2.6
RSHF-1500	1500x75x8	±0.025		5.7
RSHF-2000	2000x85x8	±0.030		10.7
RSHF-200Y	200x29x4	±0.012	Hardening	0.11
RSHF-300Y	300x35x4	±0.013		0.41
RSHF-500Y	500x45x6	±0.015		0.8
RSHF-600Y	600x48x6	±0.016		0.9
RSHF-750Y	750x48x6	±0.018		1.7
RSHF-1000Y	1000x48x6	±0.020		2.6
RSHF-1500Y	1500x75x8	±0.025		5.7
RSHF-2000Y	2000x85x8	±0.030		10.7

---

## Straight Edge Bevel-Type



- Straight edge bevel-type is very convenient because an using surface have bevel shape.

Item Code	Overall Length x Width x Thickness (mm)	Straightness (mm)		Net Weight (kg)
RSHV-200	200x29x4	±0.012	Without Hardening	0.11
RSHV-300	300x35x4	±0.013		0.41
RSHV-500	500x45x6	±0.015		0.8
RSHV-600	600x48x6	±0.016		0.9
RSHV-750	750x48x6	±0.018		1.7
RSHV-1000	1000x48x6	±0.020		2.6
RSHV-1500	1500x75x8	±0.025		5.7
RSHV-2000	2000x85x8	±0.030		10.7
RSHV-200Y	200x29x4	±0.012	Hardening	0.11
RSHV-300Y	300x35x4	±0.013		0.41
RSHV-500Y	500x45x6	±0.015		0.8
RSHV-600Y	600x48x6	±0.016		0.9
RSHV-750Y	750x48x6	±0.018		1.7
RSHV-1000Y	1000x48x6	±0.020		2.6
RSHV-1500Y	1500x75x8	±0.025		5.7
RSHV-2000Y	2000x85x8	±0.030		10.7